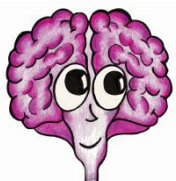


# DocuBrain® TechDoc Release Notes



A DocuBrain® Product

<http://docubrain.com/>

By Prevo Technologies, Inc.

<http://www.prevo.com/>



## DocuBrain® TechDoc 8 Build 08/17/2015 Release Notes

These release notes only document changes for the TechDoc 8-3 patch dated 08/17/2015. Please consult the TechDoc 8-2 patch, TechDoc 8-1 patch or original TechDoc 8 release notes for more information about changes introduced with those releases.

Note: The TechDoc 8-3 patch dated 08/17/2015 also includes all items addressed in TechDoc 8-2 patch dated 12/08/2014 and TechDoc 8-1 patch dated 09/08/2014.

### New Features and Improvements

#### **DM-583: Expose More Attributes on the Document and Generation Beans in Workflows**

Per request, most of the Document and Generation attributes have been exposed to workflows so that the attributes can be used in conditional logic and as output in emails, etc.

#### **DM-612: Add support for rendering/editing Workflow Form Enum Properties**

Activiti form rendering has been updated on the server to display a drop down list for an enumerated property in a workflow form. Originally, a text box would be displayed and the user was required to type in a value that matched one of the choices.

#### **DM-627: SAML Authenticator -e option needs to honor -l logging option**

The SAML Authenticator -e option was originally designed for internal testing to allow the encryption requirement for a SAML response to be disabled. Like the -s option that disables the signing requirement, neither were intended for production use and as such both wrote debug information to the log separately from the standard information written when the -l option is used. Now, all logging is controlled via the -l option.

#### **DM-630: Add External UUID to an Attachment**

An optional External UUID has been added to attachments so that they can be fetched by this UUID. This allows a UUID to be generated ahead of time so that a fetch link to an attachment can be determined before an attachment record has actually be inserted into the database.

**DM-632: Add Attachment Support to the REST Protocol**

Attachment support has been added to the REST protocol in the DM and in Scan Agent. This had been planned for the next major release but the Remedy Migration pushed the need for this feature sooner.

**DM-633: Rendering can be attempted on a Document That Should No Longer Be Rendered**

It was discovered that it was possible for the system to still attempt to render a document that no longer should be rendered. For example, if a document is scheduled to be rendered but before it is actually rendered, an Admin can change the corresponding Doc Type or Mime Type to not allow rendering but the document would still be rendered. Now, the system verifies that a document is still allowed to be rendered right before the render operation is performed.

**DM-635: Log Output Returned by Render Commands to Aid in Troubleshooting**

The output returned by render commands (tdvmctrl) is now included in the logs to aid in troubleshooting.

**Problems Resolved****DM-608: Workflow Process with Start Form Does Not Have Current User Assigned**

Workflow processes that began with a start form did not have a current user assigned. These processes go through a different initialization flow that not does invoke the TechDoc workflow process initialization. This has been corrected.

**DM-610: Fix Link Description on Compose Email for Generation**

The link description for the "Include Rendered Generation" link describes it as "Include Released Generation" which is incorrect. This has been corrected.

**DM-614: My Projects also needs to show projects the user has owner access to**

Show Projects has been updated to allow a user to see all documents they have owner access to. Originally, they could only see the ones where they were the actual owner.

**DM-615: When a non-admin user modifies a Project they don't own, they become the owner of it.**

A non-admin user could incorrectly change the owner of a project to themselves if they had rights to modify the project. Only Admins should be allowed to change the owner on a project. This has been corrected.

**DM-616: Compose Email for Project creates email link with incorrect text**

The text for a fetch link for a document in a Project email was incorrect. Instead of starting "To fetch latest generation...", it should say "To fetch latest revision...". This has been corrected.

**DM-618: Compose Email Recipient Popup Appears Blank for Some Users**

The Recipient Popup on the Compose Email servlet can appear blank in some cases. This has been corrected.

**DM-620: Default Document Access on a Folder Does Not Allow Remote User Groups for Read Access**

Default Document Access on a Folder did not allow Remote User Groups to be associated for read access. This has been corrected.