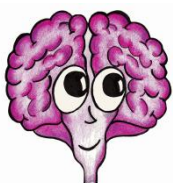


Guide to Configuring Outlook For Use with DocuBrain® TechDoc



A DocuBrain® Product

<http://docubrain.com/>

By Prevo Technologies, Inc.

<http://www.prevo.com/>



Table of Contents

Adding a Connection to TechDoc using Outlook 2013	1
Removing the Connection to TechDoc in Outlook 2013	2
Adding a Connection to TechDoc using Outlook 2010	2
Removing the Connection to TechDoc in Outlook 2010	3
Adding a Connection to TechDoc using Outlook 2007	4
Removing the Connection to TechDoc in Outlook 2007	5
Adding a Connection to TechDoc using Outlook 2003	6
Removing the Connection to TechDoc in Outlook 2003	7
Deleting documents using IMAP	7
Other Email Products	8

Adding a Connection to TechDoc using Outlook 2013

Before adding a connection to Outlook, you should review the steps below to determine if there are any settings that you don't know the correct value(s) for. If so, you should contact your local help desk of TechDoc Admin to assistance.

1. Run Outlook 2013.
2. On the "File" tab, click "Info", and then click "Add Account".
3. When the dialog comes up, click "Manual setup or additional server types" and click "Next >".
4. On the next screen, ensure that "POP or IMAP" is selected and click "Next >".
5. On the next screen, enter your settings as follows:
 - a. For "Your Name", type your normal name, i.e. *Mary Smith*
 - b. For "E-mail Address", type your normal email address, i.e. *Mary.Smith@example.com*
 - c. For "Account Type", select "IMAP" from the dropdown list.
 - d. For "Incoming mail server:", type the full host name of the TechDoc server you are connecting to, i.e. *techdoc.example.com*
 - e. For "Outgoing mail server (SMTP)", type the full host name of your SMTP server, i.e. *smtp.example.com*
 - f. For "User Name", type the username that you log into the TechDoc server with.
 - g. For "Password", type in the password you use to log into the TechDoc server with.
 - h. Optionally, leave the "Remember password" checkbox checked.
 - i. Make sure to leave the "Require logon using Secure Password Authentication (SPA) checkbox unchecked.
 - j. Click "More Settings..."
 - k. Once the new dialog opens, on the "General" tab, under "Mail Account", it will suggest a name, usually you're email account. We suggest you change this to something more meaningful, i.e. "*My TechDoc Server*" without the quotes or something similar.
 - l. While on the "General" tab, you can decide if you want to change any of the other settings.
 - m. Now click on the "Advanced" tab.
 - n. Below and to the right of "Incoming Server (IMAP)" change the dropdown to "SSL". If you change the right one, "Incoming Server (IMAP)" should now show 993, which is correct.
 - o. If necessary, change any other setting on the tabs on the dialog to support your environment.
 - p. Click "OK" to close the dialog.

- q. Now click "Next >" on the previous dialog, which should be titled "Add Account"
6. A new dialog should say "You're all set!" Click "Close". If not, go back and change settings to fix any problems.
7. You should now be returned to the "Add Account" dialog. Click "Finish".

Now you should be able to copy Emails to one of your folders under the TechDoc server mail folder that you just created. Note that any Emails moved or copied to the Records folder will automatically be tagged as folders. Also, you are free to create additional folders under the TechDoc server mail folder. If you create a folder under the Records folder, any Email placed into that folder will automatically be tagged as records too.

Removing the Connection to TechDoc in Outlook 2013

1. Run Outlook 2013.
2. On the "File" tab, click "Info", click "Account Settings ▾", and then click "Account Settings..."
3. When the dialog comes up, the "E-mail" tab should be selected.
4. Click on the name of the E-mail account that connects to TechDoc and then click on "Remove".
5. When prompted if you are sure, click "Yes".
6. You should now be returned to the "Accounts Settings" dialog. Click "Close".

Keep in mind that deleting the account does not delete the Emails that are stored on the TechDoc server. This allows you to delete the account from one PC, recreate the account on another PC, and still retain all of the Emails that are on the TechDoc server.

Adding a Connection to TechDoc using Outlook 2010

Before adding a connection to Outlook, you should review the steps below to determine if there are any settings that you don't know the correct value(s) for. If so, you should contact your local help desk of TechDoc Admin to assistance.

1. Run Outlook 2010.
2. On the "File" tab, click "Info", and then click "Add Account".
3. When the dialog comes up, click "Manually configure server settings or additional server types" and click "Next >".
4. On the next screen, ensure that "Internet E-mail" is selected and click "Next >".
5. On the next screen, enter your settings as follows:
 - a. For "Your Name", type your normal name, i.e. *Mary Smith*

- b. For "E-mail Address", type your normal email address, i.e. *Mary.Smith@example.com*
 - c. For "Account Type", select "IMAP" from the dropdown list.
 - d. For "Incoming mail server:", type the full host name of the TechDoc server you are connecting to, i.e. *techdoc.example.com*
 - e. For "Outgoing mail server (SMTP)", type the full host name of your SMTP server, i.e. *smtp.example.com*
 - f. For "User Name", type the username that you log into the TechDoc server with.
 - g. For "Password", type in the password you use to log into the TechDoc server with.
 - h. Optionally, leave the "Remember password" checkbox checked.
 - i. Make sure to leave the "Require logon using Secure Password Authentication (SPA) checkbox unchecked.
 - j. Click "More Settings..."
 - k. Once the new dialog opens, on the "General" tab, under "Mail Account", it will suggest a name, usually you're email account. We suggest you change this to something more meaningful, i.e. "My TechDoc Server" without the quotes or something similar.
 - l. While on the "General" tab, you can decide if you want to change any of the other settings.
 - m. Now click on the "Advanced" tab.
 - n. Below and to the right of "Incoming Server (IMAP)" change the dropdown to "SSL". If you change the right one, "Incoming Server (IMAP)" should now show 993, which is correct.
 - o. If necessary, change any other setting on the tabs on the dialog to support your environment.
 - p. Click "OK" to close the dialog.
 - q. Now click "Next >" on the previous dialog, which should be titled "Add New Account"
6. A new dialog should say "Congratulations!" Click "Close". If not, go back and change settings to fix any problems.
 7. You should now be returned to the "Add New Account" dialog. Click "Finish".

Now you should be able to copy Emails to one of your folders under the TechDoc server mail folder that you just created. Note that any Emails moved or copied to the Records folder will automatically be tagged as folders. Also, you are free to create additional folders under the TechDoc server mail folder. If you create a folder under the Records folder, any Email placed into that folder will automatically be tagged as records too.

Removing the Connection to TechDoc in Outlook 2010

1. Run Outlook 2010.

2. On the "File" tab, click "Info", click "Account Settings ▾", and then click "Account Settings..."
3. When the dialog comes up, the "E-mail" tab should be selected.
4. Click on the name of the E-mail account that connects to TechDoc and then click on "Remove".
5. When prompted if you are sure, click "Yes".
6. You should now be returned to the "Accounts Settings" dialog. Click "Close".

Keep in mind that deleting the account does not delete the Emails that are stored on the TechDoc server. This allows you to delete the account from one PC, recreate the account on another PC, and still retain all of the Emails that are on the TechDoc server.

Adding a Connection to TechDoc using Outlook 2007

Before adding a connection to Outlook, you should review the steps below to determine if there are any settings that you don't know the correct value(s) for. If so, you should contact your local help desk of TechDoc Admin to assistance.

1. Run Outlook 2007.
2. On the main menu bar, click "Tools", and then click "Account Settings..."
3. When the dialog comes up, on the "E-mail" tab, click "New..."
4. On the new dialog, ensure that "Microsoft Exchange, POP3, IMAP, or HTTP" is selected and click "Next >".
5. On the next screen, click the "Manually configure server settings or additional server types" checkbox and click "Next >".
6. On the next screen, ensure that "Internet E-mail" is selected and click "Next >".
7. On the next screen, enter your settings as follows:
 - a. For "Your Name", type your normal name, i.e. *John Doe*
 - b. For "E-mail Address", type your normal email address, i.e. *John.Doe@example.com*
 - c. For "Account Type", select "IMAP" from the dropdown list.
 - d. For "Incoming mail server:", type the full host name of the TechDoc server you are connecting to, i.e. *techdoc.example.com*
 - e. For "Outgoing mail server (SMTP)", type the full host name of your SMTP server, i.e. *smtp.example.com*
 - f. For "User Name", type the username that you log into the TechDoc server with.
 - g. For "Password", type in the password you use to log into the TechDoc server with.
 - h. Optionally, leave the "Remember password" checkbox checked.
 - i. Make sure to leave the "Require logon using Secure Password Authentication (SPA) checkbox unchecked.

- j. Click "More Settings..."
 - k. Once the new dialog opens, on the "General" tab, under "Mail Account", it will suggest a name, usually you're email account. We suggest you change this to something more meaningful, i.e. "*My TechDoc Server*" without the quotes or something similar.
 - l. While on the "General" tab, you can decide if you want to check the "Purge items when switching folders while online". See the end of this document more info.
 - m. Now click on the "Advanced" tab.
 - n. Below and to the right of "Incoming Server (IMAP)" change the dropdown to "SSL". If you change the right one, "Incoming Server (IMAP)" should now show 993, which is correct.
 - o. Click "OK" to close the dialog.
 - p. Now click "Next >" on the previous dialog, which should be titled "Add New E-mail Account"
8. The final screen should say "Congratulations!" Click "Finish".
 9. You should now be returned to the "Accounts Settings" dialog. Click "Close".

Now you should be able to copy Emails to one of your folders under the TechDoc server mail folder that you just created. Note that any Emails moved or copied to the Records folder will automatically be tagged as folders. Also, you are free to create additional folders under the TechDoc server mail folder. If you create a folder under the Records folder, any Email placed into that folder will automatically be tagged as records too.

Removing the Connection to TechDoc in Outlook 2007

1. Run Outlook 2007.
2. On the main menu bar, click "Tools", and then click "Account Settings..."
3. When the dialog comes up, the "E-mail" tab should be selected.
4. Click on the name of the E-mail account that connects to TechDoc and then click on "Remove".
5. When prompted if you are sure, click "Yes".
6. You should now be returned to the "Accounts Settings" dialog. Click "Close".

Keep in mind that deleting the account does not delete the Emails that are stored on the TechDoc server. This allows you to delete the account from one PC, recreate the account on another PC, and still retain all of the Emails that are on the TechDoc server.

Adding a Connection to TechDoc using Outlook 2003

Before adding a connection to Outlook, you should review the steps below to determine if there are any settings that you don't know the correct value(s) for. If so, you should contact your local help desk of TechDoc Admin to assistance.

1. Run Outlook 2003.
2. On the main menu bar, click "Tools", then click "E-mail Accounts..."
3. When the dialog comes up, click "Add a new e-mail account", and then click "Next".
4. On the next screen, click "IMAP" and then click "Next".
5. On the next screen, enter your settings as follows:
 - a. On "Your Name:", type your normal name, i.e. *Mary Smith*
 - b. On "E-mail Address:", type your normal email address, i.e. *Mary.Smith@example.com*
 - c. On "Incoming mail server (IMAP):", type the full host name of the TechDoc server you are connecting to, i.e. *techdoc.example.com*
 - d. On "Outgoing mail server (SMTP):", type the full host name of your SMTP server, i.e. *smtp.example.com*
 - e. On "User Name:", type your TechDoc username, i.e. *msmith*
 - f. On "Password:", type in the password you use to log into the TechDoc server with.
 - g. Click on the "More Settings ..." button, when that dialog comes up:
 - i. Click on the Advanced tab
 - ii. Under the "Incoming server (IMAP):", check "This server requires an encrypted connection (SSL)"
 - iii. After checking the box, the number beside "Incoming server (IMAP):" should have changed to 993.
 - iv. Click "OK" to close this dialog box.
 - h. Click "Next".
6. Click "Finish".

Now you should be able to copy Emails to one of your folders under the TechDoc server mail folder that you just created. Note that any Emails moved or copied to the Records folder will automatically be tagged as folders. Also, you are free to create additional folders under the TechDoc server mail folder. If you create a folder under the Records folder, any Email placed into that folder will automatically be tagged as records too.

Removing the Connection to TechDoc in Outlook 2003

1. Run Outlook 2003.
2. On the main menu bar, click "Tools", then click "E-mail Accounts..."
3. When the dialog comes up, click "View or change existing e-mail accounts", and then click "Next".
4. Click on the name of the account that talks to TechDoc.
5. Click "Remove".
6. When prompted if you are sure, click "Yes".
7. Click "Finish".
8. Microsoft recommends closing and reopening Outlook after removing accounts.

Keep in mind that deleting the account does not delete the Emails that are stored on the TechDoc server. This allows you to delete the account from one PC, recreate the account on another PC, and still retain all of the Emails that are on the TechDoc server.

Deleting documents using IMAP

If you want to delete the Emails stored on the TechDoc server, you can delete them before you delete the connection. Remember that when you delete Emails stored on a server using IMAP that the Emails are not immediately deleted.

IMAP servers don't delete Emails the same way that Outlook normally deletes them. This difference is not caused by TechDoc but is actually a requirement of the IMAP protocol that TechDoc uses to communicate with Outlook.

When you delete an Email residing on an IMAP server, you will notice that Outlook draws a line through the Email you just deleted (meaning that it has been marked for deletion). To actually delete it, you can click on "Edit" on the main Outlook menu, click on "Purge" and then click on the desired purge option. Likewise, you can select the Email, then click on "Edit" on the main Outlook menu, and then click on "Undelete" if you change your mind and want to keep the Email.

You can also use a web browser to log in to the TechDoc server and delete the emails from there. You can also make a help desk request to have a TechDoc Librarian or Admin delete them for you.

Other Email Products

These instructions specifically describe how to configure Outlook to connect to TechDoc. However, TechDoc has been written to follow the IMAP standard. Therefore, this capability should work with most other Email clients that support IMAP too (whether on Windows, Mac, Linux, etc.)